

ANIMAL DIVERSITY: BSC 2011L

FALL 2008

Professor:

Dr. Walter Tschinkel
203 Bio Unit 1, 644-4489
tschinkel@bio.fsu.edu
Office hours by appt.

Lectures: 102 HCB; T/R
11:00A.M.-12:15P.M.

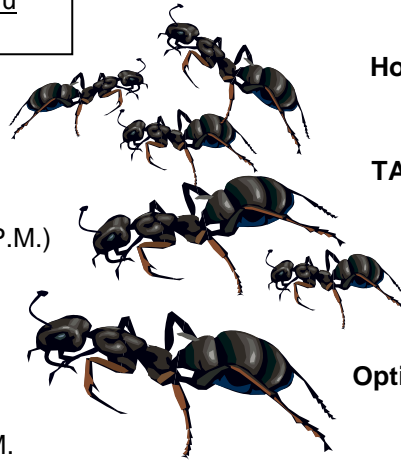
Labs: 1071 KIN
(Times as individually scheduled)

Lab Coordinator:

Jean Hancock
1055 KIN; 644-9839
hancock@bio.fsu.edu
M-F (8:00A.M. - 5:00P.M.)

Lab Manager:

Jessi Freed,
1064 KIN; 645-7888
jfreed@bio.fsu.edu
M 9:00A.M. - 1:00 P.M.



Honcho:

Timothy Swain swain@bio.fsu.edu

TAs:

Paul Gignac pgignac@bio.fsu.edu
Lauren Hart hart@bio.fsu.edu
Bonnie Garcia bjg04c@fsu.edu
Anna Strimaitis anna@bio.fsu.edu
Lisa Hollensead lisa.hollensead@noaa.gov

Optional text:

A Guide to Biology Lab, by Thomas Rust

<http://bio.fsu.edu/~bsc2011/>

Required Texts:

An Introduction to Animal Diversity, 5th edition by Tschinkel, et. al.

Animal Diversity, by Hickman, Roberts, Keen, Larson & Eisenhour, (HRKLE), 4th edition

All supplemental material and course lecture notes will be posted on Blackboard (lecture) or the web site (lab).

Lecture Information:

On Thursdays the lecture topic will be continued and/or supplemented with a discussion or a lecture quiz.

The 'Shapes of Life' video series will be shown in BIO 208, 9-10A.M on Sep. 4, 11, 18, 25, Oct. 5, 23, 30 & Nov. 6

Date	Lecture and Lab Topics	Lab Quizzes	Assigned Readings
T 08/26 0	Lecture: Overview: Logistics of Lecture/Lab Course (102 HCB) Introduction to Diversity (102 HCB) Official Drop/Add Lab 0: Use of the Microscope (1071 KIN)		HRKLE, Ch. 1 (p1-25, 28-32), 2, 3, & 4 Tschinkel, Appendices A & B
R 08/28	Lecture: Porifera		HRKLE, Ch. 6 (105-115)
T 09/02 1	Lecture: Cnidaria (102 HCB) Lab I: Porifera		HRKLE, Ch. 3, (59-66) & 7 Tschinkel, Ch. 1
R 09/04	Lecture: Cnidaria cont.	No Quiz	
T 09/09 2	Lecture: Acoelomates: Platyhelminthes & Nemertina (Nemertea) Lab II: Cnidaria (1071 KIN)	Quiz 1 on Labs 0-I	HRKLE, Ch. 3, 4, & 8 Tschinkel, Ch. 2
R 09/11	Lecture: Acoelomates cont.		
T 09/16 3	Lecture: Pseudocoelomates Lab III: Acoelomates	Quiz 2 on Labs 0-II	HRKLE, Ch. 3, 4, & 9 Tschinkel, Ch. 3 & 4
R 09/18	Lecture: Pseudocoelomates cont.		
T 09/23 4	Lecture: Annelida Lab IV: Pseudocoelomates	Quiz 3 on Labs 0-III	HRKLE, Ch. 3, 4 & 11 Tschinkel, Ch. 5
R 09/25	Lecture: Annelida cont.		

Boxed #s correspond to weeks when labs are held, NOT chapters in the lab manual

T	09/30	Lecture: Arthropoda I (Chelicerata & Crustacea) Lab V: Annelida	Quiz 4 on Lab 0-IV	HRKLE, Ch. 12 (p219-236) Tschinkel, Ch. 6
	5			
R	10/02	Lecture: Arthropoda I cont.		
T	10/07	Lecture: Arthropoda II (Uniramia) Lab VI: Arthropoda I	Quiz 5 on Lab V	HRKLE, Ch. 12 (p236-258) Tschinkel, Ch. 7
	6			
R	10/09	Lecture: Slide Review for Midterm Practical Exam (102 HCB) - during regularly scheduled lecture period.		
M	10/13	Review for Lab Practical Exam (1071 KIN) Sign up for the review session you wish to attend.		No labs this week.
T	10/14	Lecture: Arthropoda II (Uniramia) cont.		No labs this week.
W	10/15	Midterm Practical Exam (1071 KIN) - covering Labs 1-6 only Sign up for the exam session you wish to attend. You must take this exam only during the time for which you signed up		No labs this week.
R	10/16	Lecture: Arthropoda II cont. again.		No labs this week
T	10/21	Lecture: Mollusca Lab VII: Arthropoda II (Uniramia)	Quiz 6 on Labs 0-XI	HRKLE, Ch. 10 Tschinkel, Ch. 8 & Appendix C
	7			
R	10/23	Lecture: Mollusca cont.		
T	10/28	Lecture: Lophophorates & Echinodermata Lab VIII: Mollusca	Quiz 7 on Labs 0-XII	HRKLE, Ch. 13, 14 Tschinkel, Ch. 9
	8			
R	10/30	Lecture: Lophophorates & Echinodermata cont.		
T	11/04	Lecture: Protochordata & Chordata Lab IX: Bryozoa & Echinodermata	Quiz 8 on Lab 0-XIII	HRKLE, Ch. 15-20 Tschinkel, Ch. 10 & 11
	9			
R	11/06	Lecture: Chordata cont.		
T	11/11	Veteran's Day No Lecture Lab X: Chordata	No Labs for sections 1, 2 & 3 – they will do make-ups Quiz 9 on Labs 0-IX	Tschinkel, Ch. 12 & 13
	10			
R	11/13	Lecture: Protozoa		HRKLE, Ch. 5
F	11/14	Homecoming – Labs 11 & 12 will NOT be cancelled (12 starts before 1:10pm)		
T	11/18	Lecture: Protozoa cont. Lab XI: Protozoa	Quiz 10 on Labs 0-X Quiz 11 = Protozoa Lab Drawings	Tschinkel, Ch. 14
	11			
R	11/20	Lecture: TBA		
T	11/25	Lecture: Slide Review for Final Practical Exam (102 HCB) - during the regularly scheduled lecture period.		No labs this week.
R	11/27	Thanksgiving Holiday		
M	12/01	Review for Final Practical Exam in the lab (1071 KIN) Sign up for the review period you wish to attend.		No labs this week.
T	12/02	Review for Final Lecture Exam		
W	12/03	Lab Final Practical Exam (1071 KIN) - covering labs I-XI Sign up for the exam session you wish to attend. You must take this exam only during the time for which you signed up.		No labs this week.
R	12/04	Review for Final Lecture Exam cont. (102 HCB) - during the regularly scheduled lecture period.		No labs this week.

You will need the following laboratory equipment for BSC 2011L:

drawing notebook 1 scalpel 1 pair fine (splinter) forceps 1 ruler
1 pair small (Iris) scissors 2 blades 1 dissection needle

Kits with the above equipment are available at the FSU or Bill's Bookstore. If you wish to wear gloves for dissections, they may be purchased from the FSU & Bill's bookstores and from local drugstores.

Grades will be determined as follows:

TA Evaluation (See web site)	2.5%	Weekly Lecture Quizzes	30%
Notebooks (See web site)	2.5%	Final Practical Exam	20%
Weekly Lab Quizzes	15%	Final Lecture Exam	15%
Midterm Practical Exam	15%	Totals	100%

- Plus/Minus grades will not be used this semester.
- All examinations and quizzes are comprehensive.
- You must attend all labs. There are no make-up weekly lab quizzes or weekly lecture quizzes and no specific make-up labs. Students missing any portion of this course MUST see the coordinator or professor with their documentation.

Notebooks

- Expectations for your lab notebooks will be posted on the web and in the lab. They will be further explained during the first or second lab.
- All drawings submitted for grading must be your original work from the current semester.
- Students re-taking the class must re-do the ALL work. Students excused from a lab, may copy drawings but MUST mark them as copied in their notebook.

The lab notebooks will be graded out of 100 points by the TAs using a spreadsheet with the following point distribution:

- 2 points for actually writing your name and section # on your lab notebook
- 2 points for actually writing your name and section # on your lab manual
– this will be checked at random
- 78 points for the drawings (2 points per required drawing)
- 4 points for the labeling of the diagrams
- 4 points for using a ruler for the labeling lines
- 4 points for quality overall of the drawings (clean pencil lines and no smudges)
- 4 points for extra drawings
- 2 points for overall quality (subjective)

TA Evaluation

This portion of your grade, often termed 'TA Points', will also be outlined in a document posted on the web and in the lab, and explained to you in the first or second lab. It is based generally on your lab participation and work habits. 2.5% of your course grade is based on such points assigned by your TA at the end of the semester. Each TA has the right to add extra criteria to this list, but those outlined below serve as a general guideline to help you understand our expectations of you during this course. Doing all of these does not guarantee full TA credit points, but it certainly will help!

- Arrive on time to lab & stay the entire time. Use the lab time judiciously.
- Be prepared for the lab: read the material, have your manual, notebook and dissection kit.
- Complete all work and turn it in on time.
- Keep your work area clean and organized.
- Learn to work well independently and as a team member.
- Hand in only your own work, done during the current semester for grading (notebook, quizzes & all other assignments.)

- Keep lab area neat and clean.
 - Put away all specimens on the back bench in their proper place.
 - Wash dissection pans, slides and cover-slips, dry and put away
- Pay attention in class.
- Respect and help the TA and your peers.
- No food or drinks in lab, and no cell phone use (to send/receive calls or text messages).
- Ask permission of the TA to leave the room to use the bathroom
- Take all personal belongings with you at the end of each lab.
- Pick up all lab quizzes and extra credit quiz slips.
- Go to your TA's office hours or see the lab coordinator about anything that you do not understand. Likewise, see the Instructor or the coordinator about any issues that may be impacting your grade that you think we should be made aware of (long term illnesses etc.)

PLEASE NOTE:

- It is extremely important that students keep up with the course material on a regular basis. Past experience has shown that those who are able to stay on top of the course material on a daily or weekly basis are those who do the best in this course. The materials posted on the course web site and on Blackboard are a valuable resource.
- The lab manual is the driving force for the lab portion of this course. Students should consider the material presented in it, or during lab to override any found on the web or in any other texts, including the lecture text (HKRLE).
- Each week we will be dealing with one or more new phyla, each with its own peculiar brand of terminology. Studying animal diversity is like learning a foreign language: It is necessary to learn not only the vocabulary, but also the correct plurals for each word, how the words are used and, of course, the correct meaning of each new word or term.
- This document and all others produced for this course are available upon request in alternate formats for individuals with print-related disabilities. Contact Dr. Tschinkel for more information.

Academic Honor Policy

The Florida State University Academic Honor Policy outlines the University's expectations for the integrity of students' academic work, the procedures for resolving alleged violations of those expectations, and the rights and responsibilities of students and faculty members throughout the process. Students are responsible for reading the Academic Honor Policy and for living up to their pledge to ". . . be honest and truthful and . . . [to] strive for personal and institutional integrity at Florida State University." (Florida State University Academic Honor Policy, found at: <http://dof.fsu.edu/honorpolicy.htm>.)

Americans with Disabilities Act

Students with disabilities needing academic accommodation should: (1) register with and provide documentation to the Student Disability Resource Center; and (2) bring a letter to the instructor indicating the need for accommodation and what type. This should be done the first week of class. The syllabus and other class materials are available in alternate format upon request. For more information about services available to FSU students with disabilities, contact the:

Florida State University, Student Disability Resource Center
 97 Woodward Avenue, South, 108 Student Services Building
 Tallahassee, FL 32306-4167, (850) 644-9566 (voice), (850) 644-8504 (TDD)
sdrc@admin.fsu.edu
<http://www.disabilitycenter.fsu.edu/>